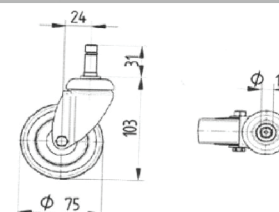


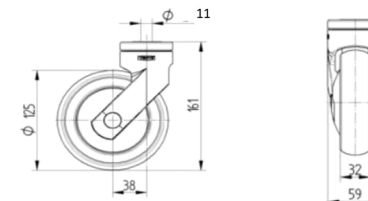
STANDARD CASTOR

Ø 75 MM



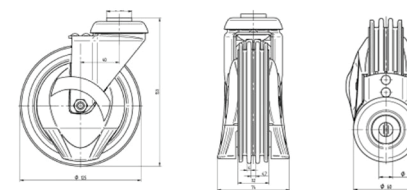
SYNTHETIC CASTOR

Ø 100 MM
Ø 125 MM



TRAVELATOR CASTOR

Ø 125 MM



TYPE

*RAW MATERIAL

WEIGHT

BASIC 80 L

A = PP 15% GF
(Polypropylene)

kg
8,4

EKO 80 L

A = PP 15% GF
(>75% Recyclate)

kg
8,4

GLAMOUR 80 L

A = PC
(Polycarbonate)

kg
10,4